



## 32a/20-24 Sorrell Street Parramatta NSW

1  1 

Conveniently located within minutes walk to Church Street restaurant/cafe precinct, Parramatta CBD, Rivercat, Rail & Bus Interchange and Westfield. Electric and water included.

**View :** <https://www.moshav.com.au/7912182>

### Features include:

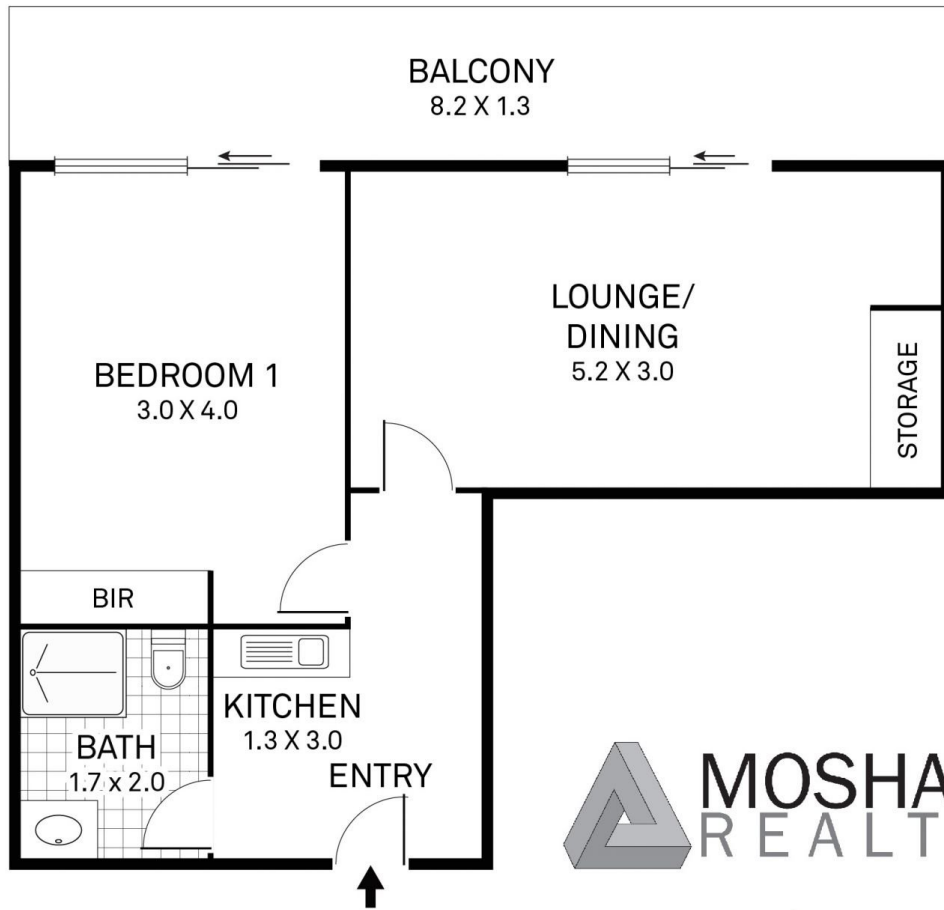
- Tiled throughout
- Good size living area
- Kitchenette only with sink and electric cooktop
- Main bedroom with built in robe
- Large balcony
- Security video intercom
- Shared laundry, washing machine and dryer included
- Just a short walk from the Parramatta CBD, Parramatta River and picturesque parklands
- Only metres from the local Coles and a host of quality schools, shops, restaurants and amenities



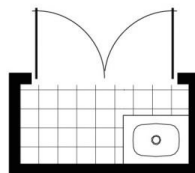
**Mark Hahne**  
02 9188 5000



**Rental Enquiries**  
02 9188 5000



moshav.com.au



SHARED LAUNDRY



Scale in metres. Indicative only. Dimensions are approximate. All information contained herein is gathered from sources we believe to be reliable. However we cannot guarantee its accuracy and interested parties should rely on their own enquiries.

|            |   |                    |
|------------|---|--------------------|
| BALCONY    | - | 11.3m <sup>2</sup> |
| RESIDENCE  | - | 36.1m <sup>2</sup> |
| TOTAL AREA | - | 47.4m <sup>2</sup> |



**32a/20-24 Sorrell Street, Parramatta**