



41/22-28 Wellington Street Bondi NSW

2  1  1 

*** Open for inspections have been postponed until further notice - please contact us directly on 9188 5000 to book in a private inspection ***

View : <https://www.moshav.com.au/lease/nsw/eastern-suburbs/bondi/residential/apartment/6634500>

Set back from the street on the northern side of The Duke, this sun-drenched Bondi apartment offers a superb location. Brand new renovation throughout offers two-bedrooms with spacious open floorplan that opens to a large balcony overlooking the sunny outdoor pool and common garden.

Located on the 7th floor with expansive views of Bondi Beach and surrounding Harbour. An easy walk down Francis Street to the beach and a short stroll to Hall Street village, Bondi Public School and Thomas Hogan Reserve.



Mark Hahne
02 9188 5000



Rental Enquiries
02 9188 5000

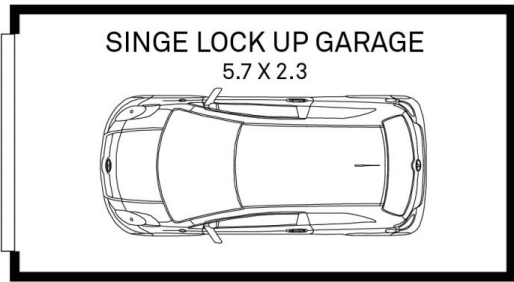
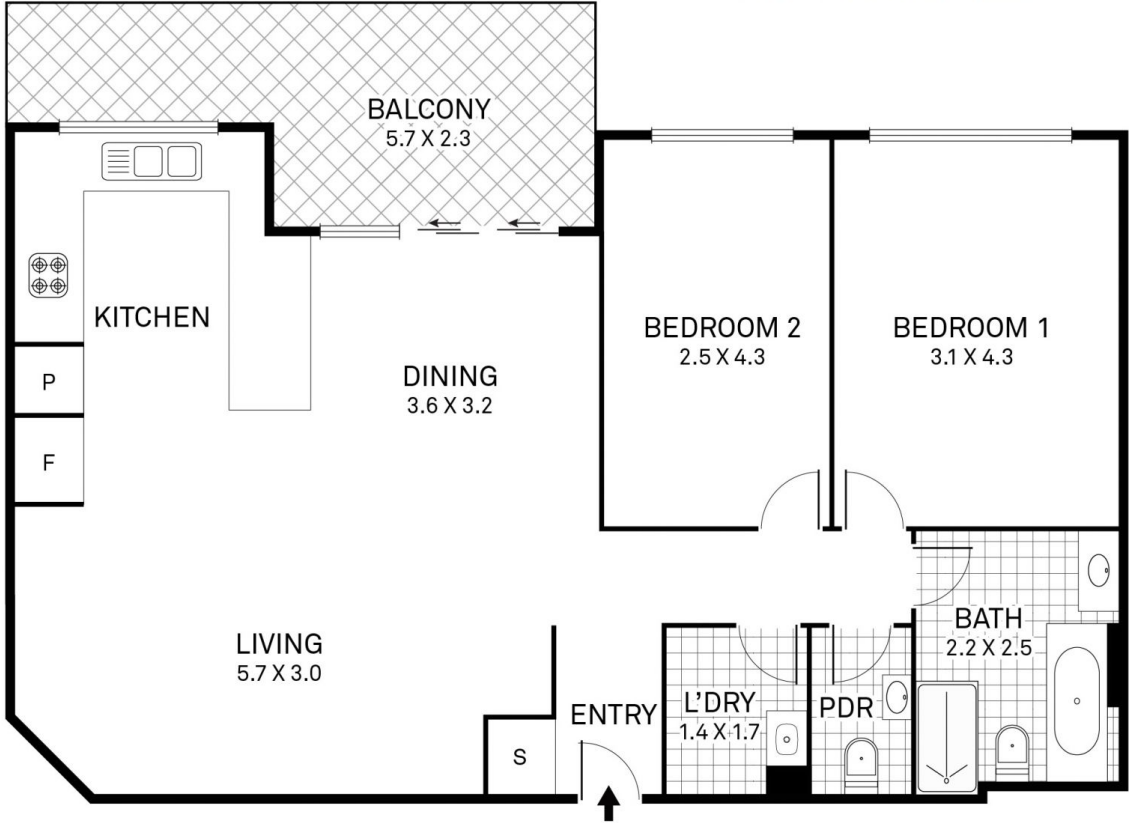
- Brand new renovation throughout

<https://www.moshav.com.au>

Moshav Realty is a boutique property management agency servicing the Eastern Suburbs, Eastern Beaches, CBD & a



moshav.com.au



(NOT IN POSITION)



Scale in metres. Indicative only. Dimensions are approximate. All information contained herein is gathered from sources we believe to be reliable. However we cannot guarantee its accuracy and interested parties should rely on their own enquiries.

BALCONY	-	11.9m ²
GARAGE	-	14.6m ²
RESIDENCE	-	77.3m ²
TOTAL AREA	-	103.8m ²

41/22 Wellington Street, Bondi