



32a/20-24 Sorrell Street Parramatta NSW

1  1 

*** Open for inspections have been postponed until further notice - please contact us directly on 9188 5000 to book in a private inspection ***

View : <https://www.moshav.com.au/lease/nsw/parramatta/parramatta/residential/apartment/6428688>

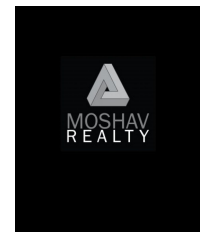
Freshly painted & conveniently located within minutes walk to Church Street restaurant/cafe precinct, Parramatta CBD, Rivercat, Rail & Bus Interchange and Westfield. Electric and water included.

Features include:

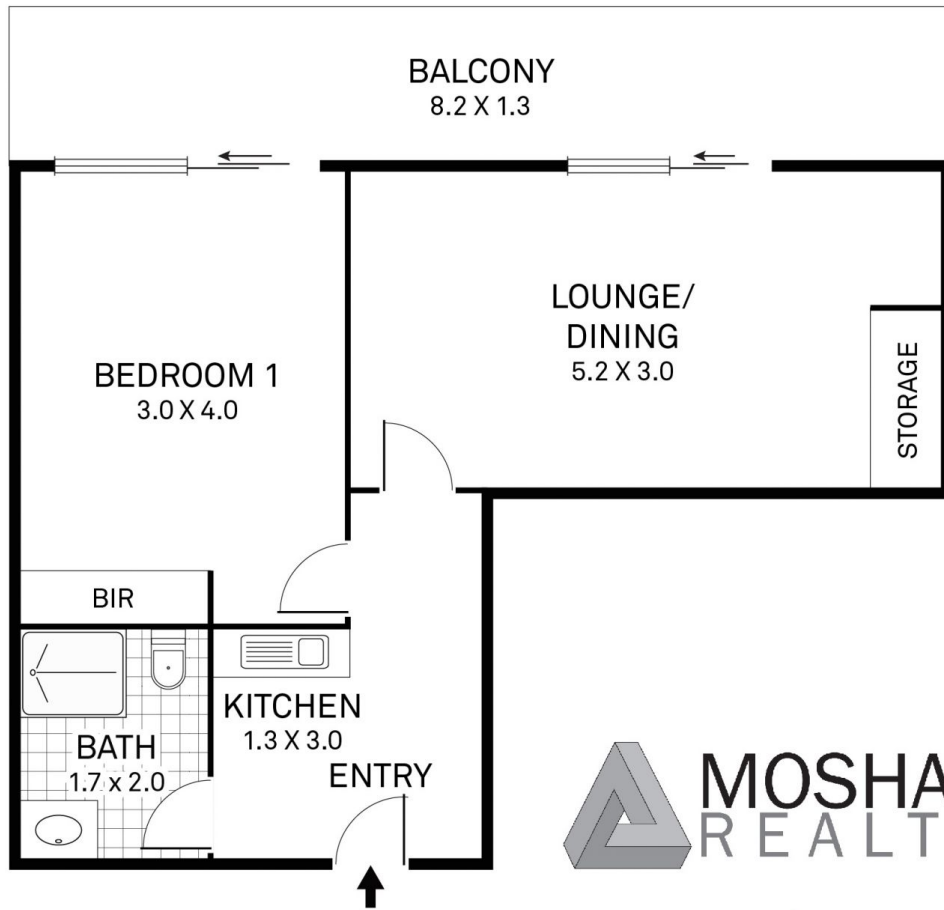
- Tiled throughout
- Good size living area
- Kitchenette with electric cooktop
- Main bedroom with built in robe
- Large balcony
- Security video intercom
- Shared laundry, washing machine and dryer included



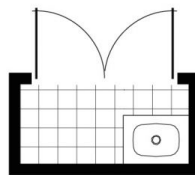
Mark Hahne
02 9188 5000



Rental Enquiries
02 9188 5000



moshav.com.au



SHARED LAUNDRY



Scale in metres. Indicative only. Dimensions are approximate. All information contained herein is gathered from sources we believe to be reliable. However we cannot guarantee its accuracy and interested parties should rely on their own enquiries.

BALCONY	-	11.3m ²
RESIDENCE	-	36.1m ²
TOTAL AREA	-	47.4m ²



32a/20-24 Sorrell Street, Parramatta